

# ENIS

K O R E A



*Solution of Recycling Energy*

**Ecoboiler**  
**Ecoincinerator**

<http://www.eco-boiler.co.kr>



# 맑고 깨끗한 환경

Green environment

(주) 이엔에스 코리아 가 함께 합니다.  
ENS KOREA is realizing it with you



(주)이엔에스 코리아는 “ECO” 라는 브랜드명으로 세계 최고의 기술력과 “최고의 품질”, “최고의 성능” 을 가진 제품으로 항상 고객과 함께하는 친환경 선두기업으로 나아갈 것 입니다.  
모든 품질활동은 고객의 생각을 바탕으로 한 체계적인 제품의 생산과 공급을 위한 것이며, 전 임직원은 세계적인 제품수준에 맞는 품질수준 향상 및 고객 최우선이라는 사훈으로 제품의 개발,생산,공급,사후 서비스까지 최고의 자리를 지킬 수 있도록 끊임없는 노력을 다 할 것 입니다.

ENS KOREA will develop into a company sharing customer's thoughts through a brand called “ECO” which has “the best qualities”, “the best performance” and “the high technologies.” All of the quality activities are for production and supply of products and will do our best to keep the highest position for the development, production, supply and A/S of our products by improving qualities fit for the global quality level and considering customers as the most important thing.  
That is to say the motto of our company.

- ENS KOREA CO., LTD. -

## History

2002    2012    2013    2014    2015    2016    2017    2018    2019

- 이엔에스코리아 설립
- 소각보일러 및 대기오염 방지시설 생산기반 구축
- 폐기물을 연료로한 고효율 소각보일러 개발
- Establishment of EnS KOREA
- Establishment of production base for incineration boiler and Air pollution prevention Facilities.
- Development of incineration boiler that can make all waste energy

국내 및 동남아 및 중남미 봉제, 신발 인쇄 등에 적합한 소각보일러  
및 대기오염 방지시설 개발.  
Developed incineration boiler and air pollution prevention facility suitable  
for domestic and Southeast Asian and Latin American sewing, shoes, printing

국내 및 동남아시아, 중남미 각 나라별 지사 설립  
Establishment of branches in Korea, Southeast  
Asia, and Latin America

- 동남아 & 중남미 전역 대리점 및 A/S 센터 설립.
- 업계최초 '환경, 안전심검사 허가' 획득.
- Established Southeast Asia & Latin America Agent and A/S center
- Industry's first environment & safety inspection permission obtained





**Safety inspection & Environmental inspection**  
**Certificate for each country**



## Horizontal Water Cooled Incinerator

### Features of horizontal water-cooled incinerator

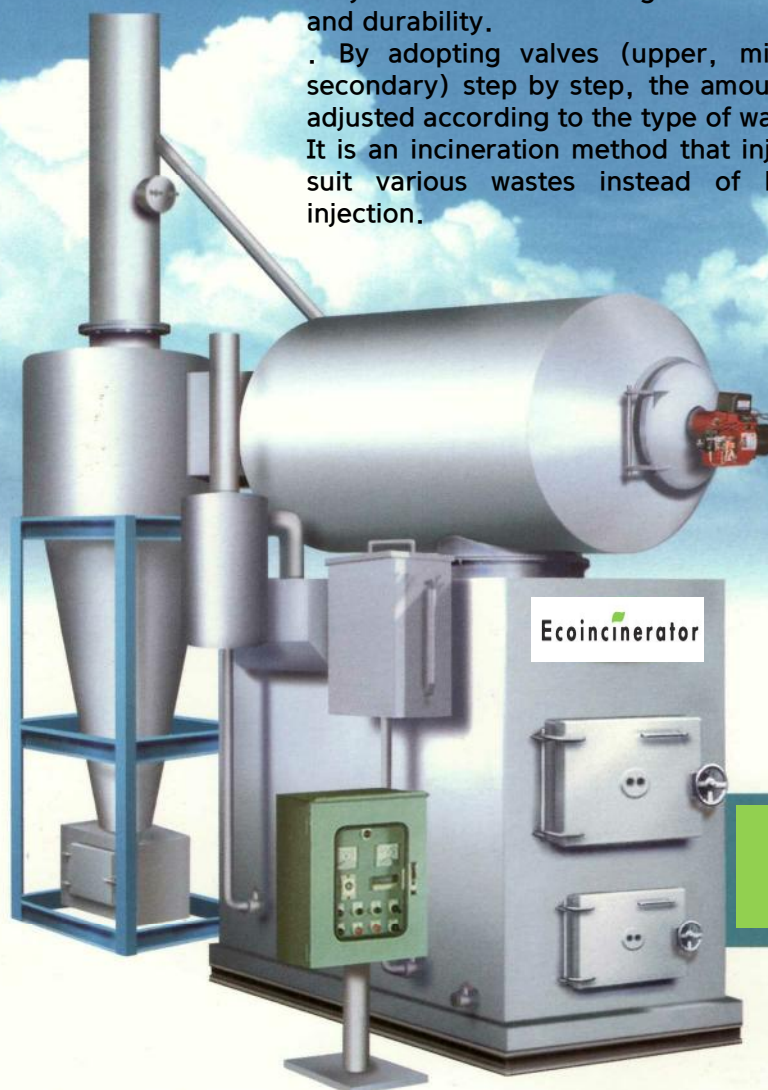
. Compactly designed and manufactured considering product performance and safety

Easy maintenance and long maintenance cost with long life and durability.

. By adopting valves (upper, middle, lower, bottom, secondary) step by step, the amount of combustion air is adjusted according to the type of waste.

It is an incineration method that injects combustion air to suit various wastes instead of batch combustion air injection.

HU



ECO-HU-type

### specifications



Model name	Incineration ability	1st combustion chamber (m <sup>3</sup> )	2nd combustion chamber (m <sup>3</sup> )	F.D Fan (HP/kw)	Ignition burner (kcal/hr)	Combustion burner (kcal/hr)
ECO-HU30	30 ~ 40	1.1	0.3	3	50,000	150,000
ECO-HU50	50 ~ 60	1.5	0.5	5	50,000	200,000
ECO-HU80	80 ~ 90	2.0	0.7	7.5	70,000	250,000
ECO-HU100	100 ~ 110	2.5	1.2	10	70,000	270,000
ECO-HU150	150 ~ 160	3.2	1.5	15	100,000	300,000
ECO-HU200	200 ~ 220	4.0	2.3	20	100,000	400,000

Specifications of the above products are subject to change without notice for quality and performance improvement.



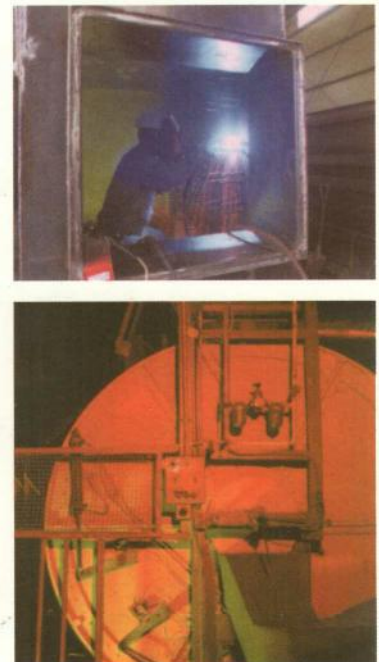
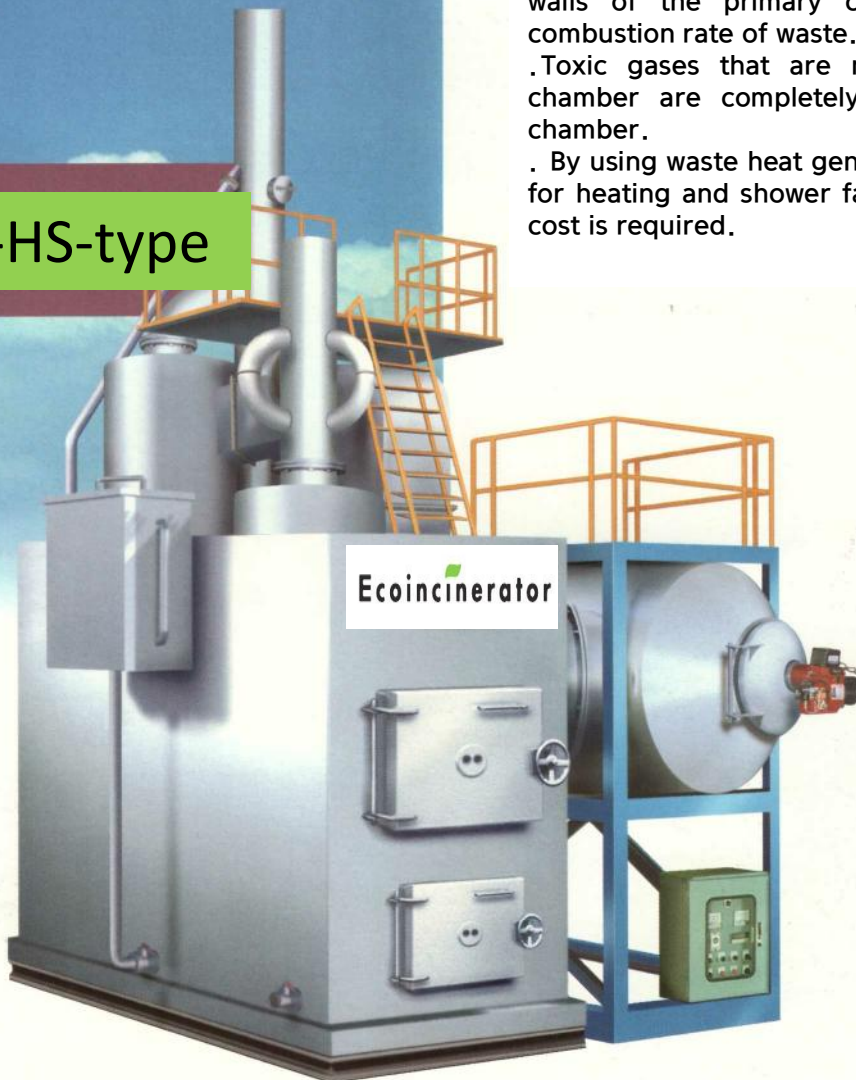
# Ecoincinerator

ECO-HS-type

## Features of Horizontal Water Cooled Incinerator

Features of horizontal water-cooled incinerator

- . High-pressure combustion air nozzles are installed on the side walls of the primary combustion chamber to accelerate the combustion rate of waste.
- . Toxic gases that are not burned in the primary combustion chamber are completely burned in the secondary combustion chamber.
- . By using waste heat generated during combustion, it can be used for heating and shower facilities and boilers, so no additional fuel cost is required.



## specifications



Model name	Incineration ability	1st combustion chamber (m <sup>3</sup> )	2nd combustion chamber (m <sup>3</sup> )	F.D Fan (HP/kw)	Ignition burner (kcal/hr)	Combustion burner (kcal/hr)
ECO-HS30	30 ~ 40	1.1	0.3	3	50,000	150,000
ECO-HS50	50 ~ 60	1.5	0.5	5	50,000	200,000
ECO-HS80	80 ~ 90	2.0	0.7	7.5	70,000	250,000
ECO-HS100	100 ~ 110	2.5	1.2	10	70,000	270,000
ECO-HS150	150 ~ 160	3.2	1.5	15	100,000	300,000
ECO-HS200	200 ~ 220	4.0	2.3	20	100,000	400,000

Specifications of the above products are subject to change without notice for quality and performance improvement.

## Batch-type Incinerator

### Features of batch-type firebrick incinerator

It is a method of incinerating one batch volume at a time, burns the waste while converting it into dry gas.

In consideration of the performance and safety of the product, fire-resistant insulation is applied to the areas where high heat contacts, and the rest is constructed of high-alumina refractory bricks and castables to completely prevent deformation of the device and high heat emitted to the outside.

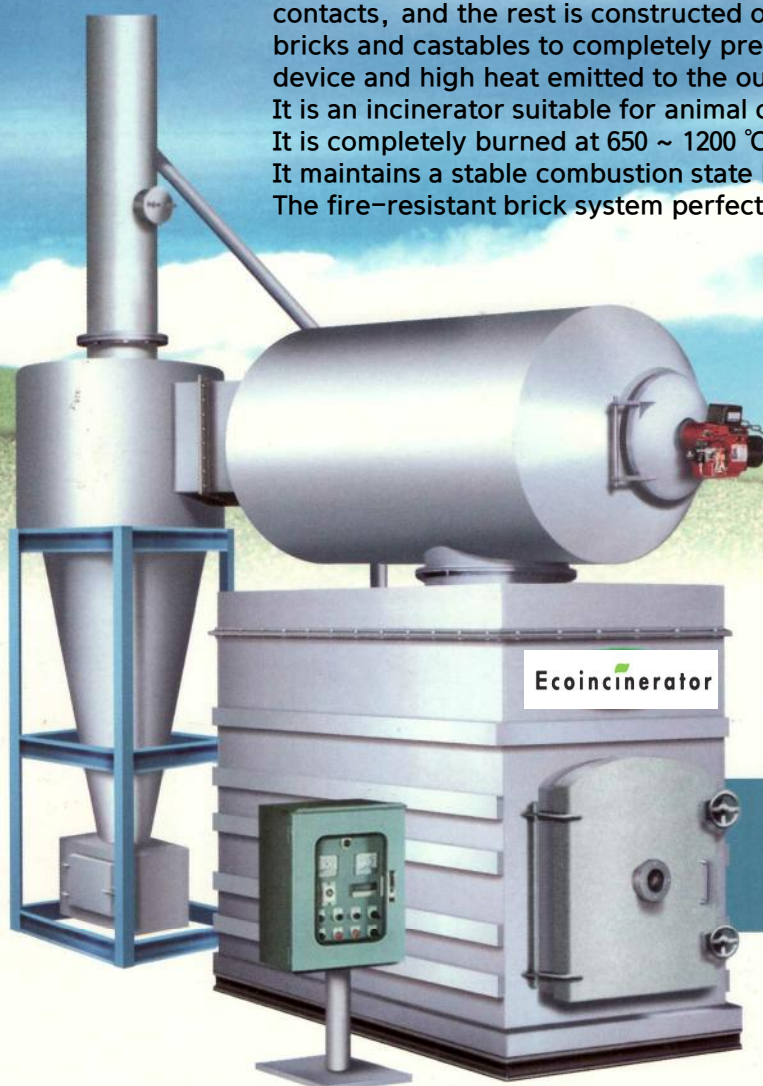
It is an incinerator suitable for animal carcasses and hospital waste.

It is completely burned at 650 ~ 1200 °C using a dry method.

It maintains a stable combustion state by giving a long residence time.

The fire-resistant brick system perfectly burns low-heat waste.

HFU



ECO-HFU-type

### specifications



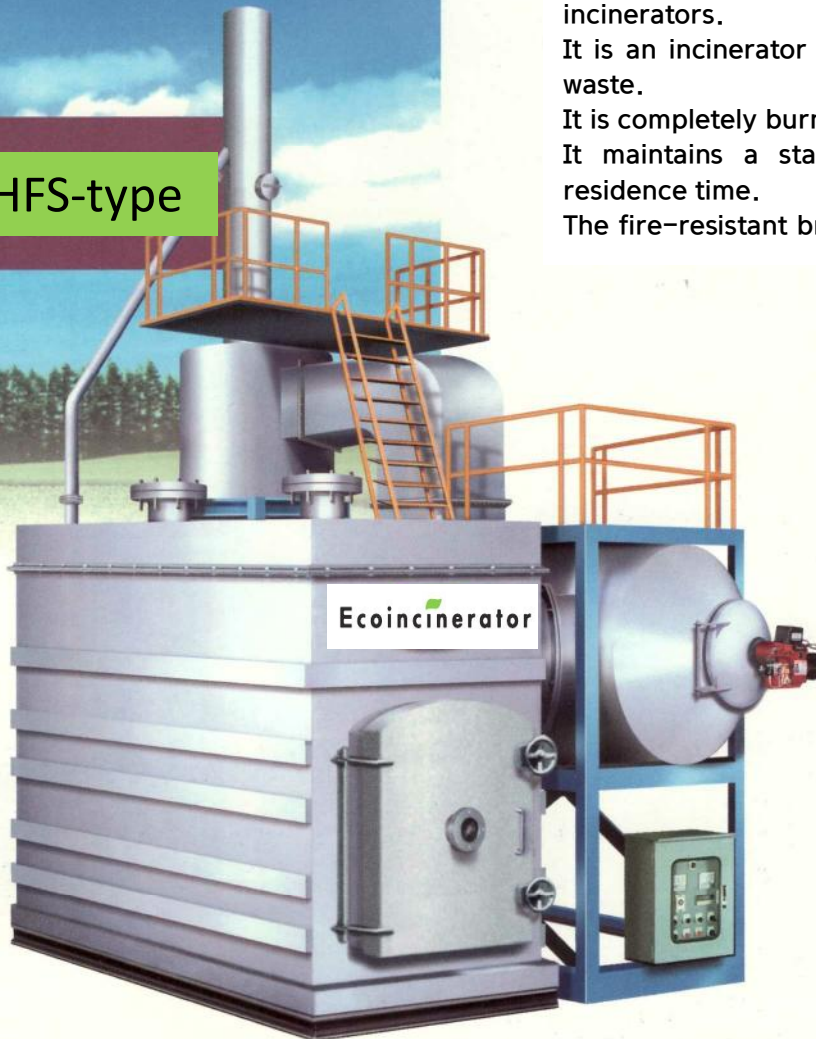
Model name	Incineration ability	1st combustion chamber (m <sup>3</sup> )	2nd combustion chamber (m <sup>3</sup> )	F.D Fan (HP/kw)	Ignition burner (kcal/hr)	Combustion burner (kcal/hr)
ECO-HFU30	30 ~ 40	1.5	0.6	3	100,000/150,000	150,000/250,000
ECO-HFU50	50 ~ 60	2.1	1.1	5	150,000/20,000	200,000/300,000
ECO-HFU80	80 ~ 90	2.5	1.7	7.5	200,000/250,000	250,000/400,000
ECO-HFU100	100 ~ 110	3.2	2.0	10	200,000/300,000	270,000/400,000
ECO-HFU150	150 ~ 160	3.9	2.3	15	200,000/300,000	300,000/400,000
ECO-HFU200	200 ~ 220	4.8	2.7	20	250,000/300,000	400,000/500,000

Specifications of the above products are subject to change without notice for quality and performance improvement.



# Ecoincinerator

## ECO-HFS-type



### Features of batch-type firebrick incinerator

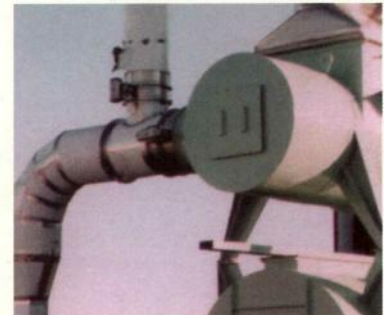
In order to shorten the burning time and remaining ash processing time, a separate floor nozzle and a blower are installed. That's why we improved the performance further by completely resolving the shortcomings of existing batch incinerators.

It is an incinerator suitable for animal carcasses and hospital waste.

It is completely burned at 650 ~ 1200 °C using a dry method.

It maintains a stable combustion state by giving a long residence time.

The fire-resistant brick system perfectly burns low-heat waste.



## specifications



Model name	Incineration ability	1st combustion chamber (m <sup>3</sup> )	2nd combustion chamber (m <sup>3</sup> )	F.D Fan (HP/kw)	Ignition burner (kcal/hr)	Combustion burner (kcal/hr)
ECO-HFU30	30 ~ 40	1.5	0.6	3	100,000/150,000	150,000/250,000
ECO-HFU50	50 ~ 60	2.1	1.1	5	150,000/20,000	200,000/300,000
ECO-HFU80	80 ~ 90	2.5	1.7	7.5	200,000/250,000	250,000/400,000
ECO-HFU100	100 ~ 110	3.2	2.0	10	200,000/300,000	270,000/400,000
ECO-HFU150	150 ~ 160	3.9	2.3	15	200,000/300,000	300,000/400,000
ECO-HFU200	200 ~ 220	4.8	2.7	20	250,000/300,000	400,000/500,000

Specifications of the above products are subject to change without notice for quality and performance improvement.

## Vertical Water Cooled Incinerator

### Features of Vertical Water Cooled Incinerator

Designed and manufactured with maximum performance and safety in mind, this is an economical product with excellent maintenance and maintenance costs.

Excellent performance for incineration of malignant waste.

Can be installed in a small space and easy to maintain

VS

ECO-VS-type

### specifications



Model name	Incineration ability	1st combustion chamber (m <sup>3</sup> )	2nd combustion chamber (m <sup>3</sup> )	F.D Fan (HP/kw)	Ignition burner (kcal/hr)	Combustion burner (kcal/hr)
ECO-VS30	30 ~ 40	0.9	0.3	3	50,000	150,000
ECO-VS50	50 ~ 60	1.2	0.5	5	50,000	200,000
ECO-VS80	80 ~ 90	1.8	0.7	7.5	70,000	250,000
ECO-VS100	100 ~ 110	2.2	1.2	10	70,000	270,000
ECO-VS150	150 ~ 160	2.9	1.5	15	100,000	300,000
ECO-VS200	200 ~ 220	3.7	2.3	20	100,000	400,000

Specifications of the above products are subject to change without notice for quality and performance improvement.



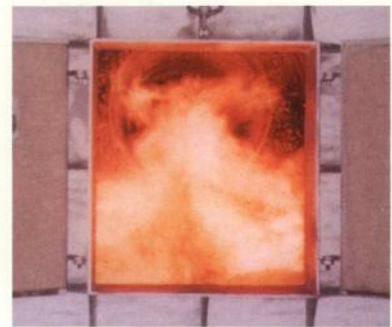
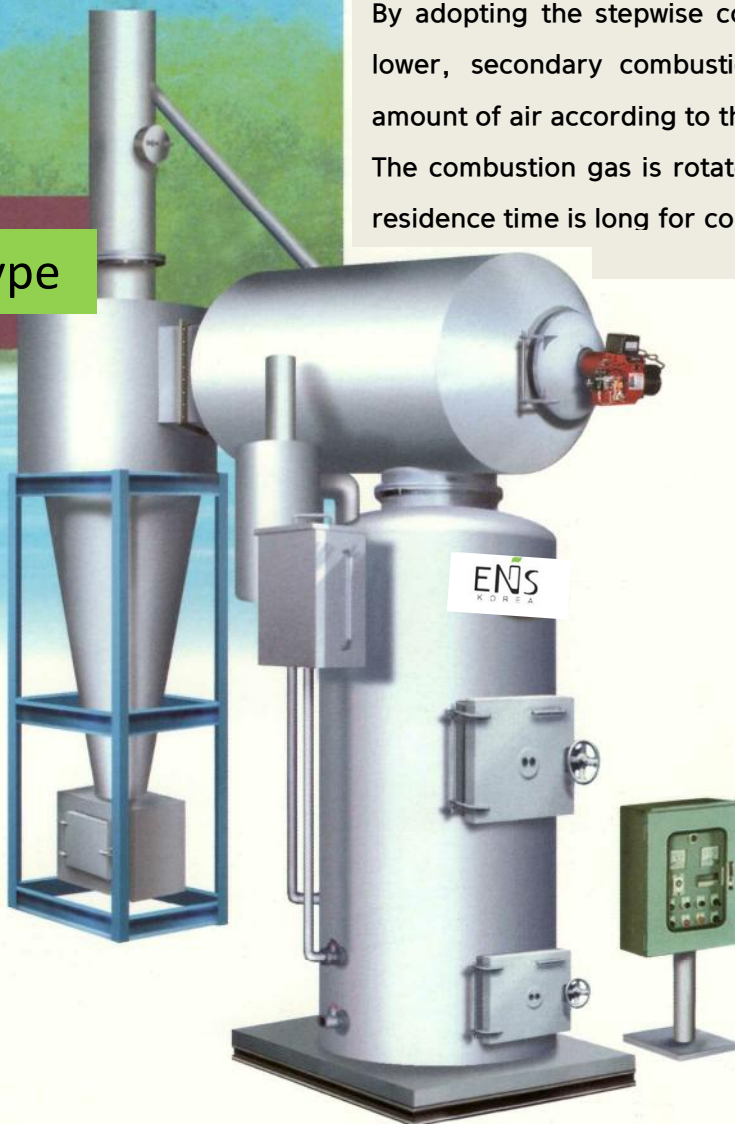
# Ecoincinerator

ECO-VU-type

## Features of Vertical Water Cooled Incinerator

By adopting the stepwise combustion method (upper, medium, lower, lower, secondary combustion), it is possible to use the appropriate amount of air according to the type of waste.

The combustion gas is rotated to shorten the combustion time, and the residence time is long for complete combustion.



## specifications



Model name	Incineration ability	1st combustion chamber (m <sup>3</sup> )	2nd combustion chamber (m <sup>3</sup> )	F.D Fan (HP/kw)	Ignition burner (kcal/hr)	Combustion burner (kcal/hr)
ECO-VU30	30 ~ 40	1.0	0.3	3	50,000	150,000
ECO-VU50	50 ~ 60	1.3	0.5	5	50,000	200,000
ECO-VU80	80 ~ 90	1.9	0.7	7.5	70,000	250,000
ECO-VU100	100 ~ 110	2.3	1.2	10	70,000	270,000
ECO-VU150	150 ~ 160	3.0	1.5	15	100,000	300,000
ECO-VU200	200 ~ 220	3.8	2.3	20	100,000	400,000

Specifications of the above products are subject to change without notice for quality and performance improvement.

# Hospital Incinerator & Animal carcass Incinerator

It is made of automatic type, so it is easy to work and prevents secondary infection.

- 동물 화장터나 병원에서 발생하는 감염성쓰레기를 즉시 소각처리하여 2차 감염 및 오염을 방지하여 사업장을 깨끗하게 유지시켜 준다.  
Infectious waste from animal crematories and hospitals can be immediately incinerated to prevent secondary infection and pollution and keep workplace clean.
- 사용 조건 및 구매자의 요구에 따라 수동, 반자동, 자동장치를 부착할수 있어 작업의 효율성을 높일 수 있다.  
Semiautomatic and automatic system can be attached according to the usage conditions and the buyer's requirements to improve the efficiency of the work.



Auto System



Auto System

Combustion Gas Burner

※ 현장조건에 맞추어 설계, 제작 (Designed according to site conditions)



- 활성탄 탭은 물리적, 화학적 방법으로 각종 유기 가스 및 악취를 흡수하는 장치입니다.  
Activated Carbon Tower is a device for absorbing various organic gases and odors by physical and chemical methods.
- 가스 가루가 활성탄 표면에 부착되는 원리이다.  
It is based on the principles that the gas powder adheres to the solid surface.
- 이 흡착 현상으로 가스, 액체 및 고체의 농도가 극히 낮을지라도 특정 흡착제를 사용하여 선택적으로 제거 할 수 있다.  
With this adsorption phenomenon, even though the concentration of gas, liquid and solid is extremely low, it can be selectively removed by using certain adsorbent.



Activated Carbon

- 백필터는 배기 가스에서 먼지 입자를 분리하는 가장 널리 사용되는 방법이다.  
Bag filter is the most widely used method of separating dust particles from exhaust gas,
- 여러가지 먼지가 함유된 배기 가스가 나란히 설치된 많은 필터를 통해 여과되는 원리  
The principles is that exhaust gas containing various dust is filtered while passing through many filters installed side by side,
- 먼지 사이즈 0.5 $\mu$ m 이상에서 99 %의 효율과 0.01 $\mu$ m에서 상당한 효율을 나타낸다.  
It has 99% efficiency at over 0.5 $\mu$ m and considerable efficiency at 0.01 $\mu$ m



Semi Dry Reactor



Lime & Active Carbon Feeder



## 대기 오염 방지 시설 Air Pollution Prevention Facility

### Wet Scrubber

- 습식 세정기는 유입되는 오염가스에 물(물+흡수제)를 뿌려서 오염 가스와 물을 펙킹의 표면에서 반응시켜 오염가스를 흡수하고 청정공기를 대기로 배출하는 장치이다.  
Wet scrubber is a device that sprays water (water+absorbent) into the incoming pollutant gas to cause the contamination gas and water to react on the surface of the packing, thereby absorbing pollutants and discharging clean air into the atmosphere.
- 액체는 주로 물이며, 경우에 따라 NaOH는 산성화 된 액체를 중화시키는 데 사용됩니다.  
The liquid is mainly water, in some cases NaOH is used to neutralize the acidified liquid.
- 입자 크기가 1 $\mu$ m 인 경우 효율은 86 ~ 99.9 %이다.  
In case of particle size 1 $\mu$ m, the efficiency is 86 ~ 99.9%.



Venturi Scrubber

Chemical Feeder

Control Panel



## 대기 오염 방지 시설 Air Pollution Prevention Facility

### Cyclone

- 입자에 작용하는 원심력에 의해 가스로부터 입자를 분리하여 입자를 상대적으로 큰 입자와 비중을 갖는 입자로 소용돌이 치게하여 분진을 모으는 장치이다.

It is a device to collect dust by separating particles from gas by the centrifugal force acting on the particles by swirling motion to particles having relatively large grains and specific gravity.

- 대형 먼지 입자에만 사용되며 신뢰성있는 성능을 발휘한다.

It is used solely for large particles of dust and exhibits reliable performance.

- 미립자의 분진 제거를 위한, 고효율 집진 장치의 전처리 장치로 사용됩니다.

For dust removal of fine particles, it is used as a pretreatment device for a high efficiency dust collector.





## 제작 및 설치

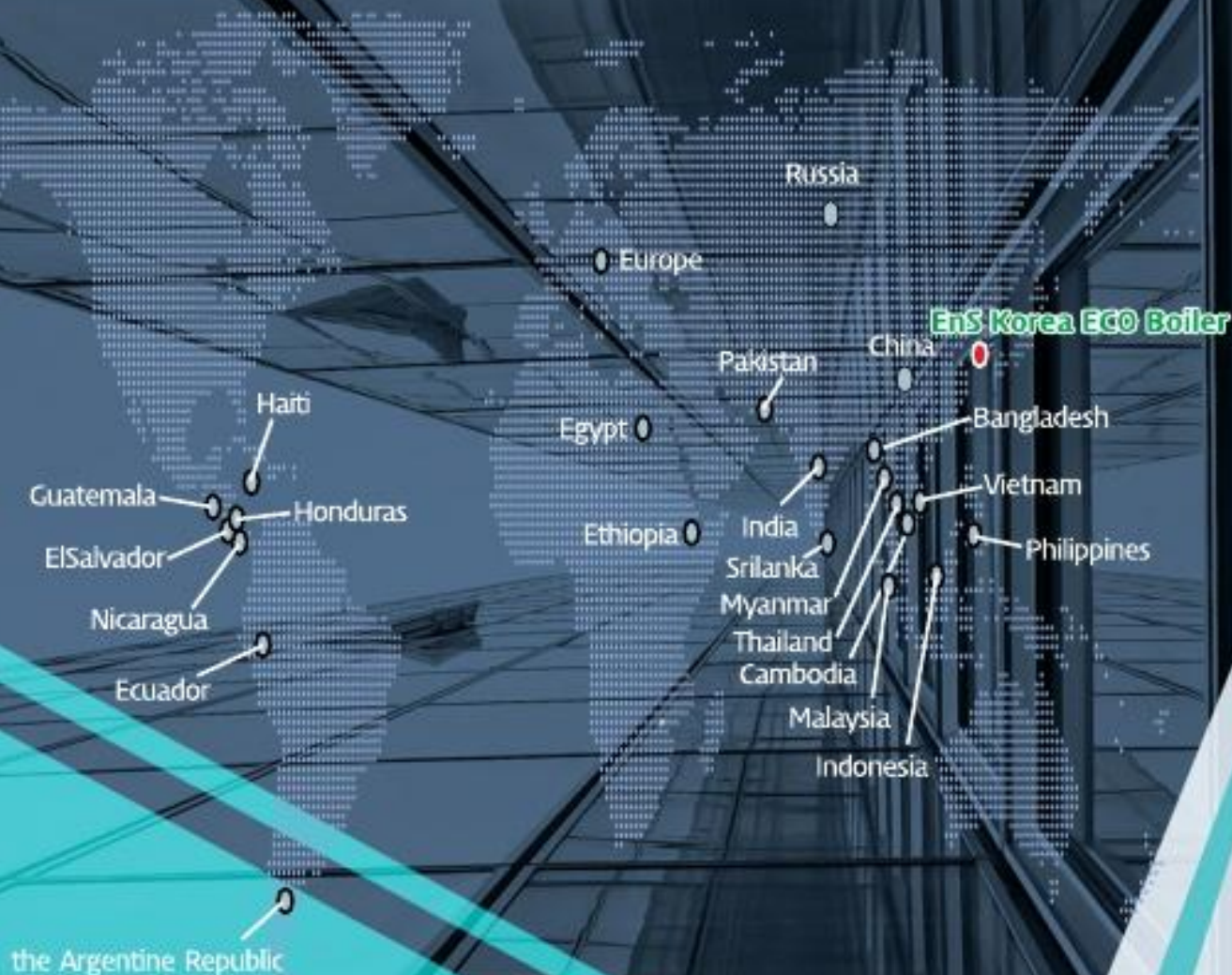
## Production & Installation





*Solution of Recycling Energy*

# Ecoboiler Ecoincinerator



**ENS**  
K O R E A

## HEAD OFFICE / FACTORY

47, 11beon-gil, Saenggoksandan 2-ro  
Gangseo-gu, Busan, Korea (Zipcode 46729)

Tel. +82-51-941-7590

Fax. +82-51-941-7591

E-mail. [jmpark@eco-boiler.co.kr](mailto:jmpark@eco-boiler.co.kr)

Homepage. <http://www.eco-boiler.co.kr>

## VIET NAM AIPT JOINT STOCK COMPANY

Add: No.86, 3.6 Gamuda Gardens Street, Tran Phu Ward, Hoang Mai District, Ha Noi

Office: No.10, Floor 3<sup>rd</sup>, CT2B Gelexia Riverside, 885 Tam Trinh, Hoang Mai, Ha Noi

Can Tho Branch: No.109, Road 4, Resettlement area of University of Medicine and  
Pharmacy, An Khanh Ward, Ninh Kieu District, Can Tho Province

Mobile: +84 79 6166 989

Phone: (+84-24).6666.5646 – Ext: 106

Mail: [purchasing@aiptgroup.com](mailto:purchasing@aiptgroup.com) / Web: [www.aiptgroup.com](http://www.aiptgroup.com)